











Outdoor life always gives people enthusiasm and happiness and CAMPLUX outdoor has that figured out. CAMPLUX outdoor is part of JAL group and dedicated to providing you an easy and efficient outdoor life style. Being more than 18 years strongly experience in gas and electric industry, JAL group is becoming one of the leadership brand cooperation in home appliances.

Portability, energy saving and innovation are the three key elements of CAMPLUX outdoor products. CAMPLUX range is constantly expanding so keen an eye out for quality, innovative products.

CAMPLUX, enjoy outdoor life!



# PORTABLE OUTDOOR GAS WATER HEATERS







|                       |                        |
|-----------------------|------------------------|
| Model                 | AY132/AY132B/AY132G    |
| Color                 | White/Black/Gray       |
| Capacity              | 1.32GPM(5L/Min)        |
| Material              | Brass + Metal + Copper |
| Fuel Type             | Propane                |
| Ignition Power Source | 2 Size D Batteries     |
| Voltage               | 3V                     |
| Installation Type     | Portable               |
| Product Dimensions    | 14.8" x 11.4" x 4.3"   |
| Product Weight        | 14.1lb                 |

- Power output at 34,000BTU/Hr.
- Portable, compact and lightweight design.
- Foldable handle for easy carry and hang up.
- Low water pressure start up at 3PSI.
- 5 safety protection.







|                       |                        |
|-----------------------|------------------------|
| Model                 | BW158/BW158G           |
| Color                 | White/Gray             |
| Capacity              | 1.58GPM(6L/Min)        |
| Material              | Brass + Metal + Copper |
| Fuel Type             | Propane                |
| Ignition Power Source | 2 Size D Batteries     |
| Voltage               | 3V                     |
| Installation Type     | Portable               |
| Product Dimensions    | 17.3" x 11.6" x 4.3"   |
| Product Weight        | 13.7lb                 |

- Power output at 41,000BTU/Hr.
- Portable, compact and lightweight design.
- Digital temperature display in Fahrenheit.
- Eco & Full switch for energy saving up to 11.5%.
- 5 safety protection.







|                       |                        |
|-----------------------|------------------------|
| Model                 | BW211/BW211G           |
| Color                 | White/Gray             |
| Capacity              | 2.11GPM(8L/Min)        |
| Material              | Brass + Metal + Copper |
| Fuel Type             | Propane                |
| Ignition Power Source | 2 Size D Batteries     |
| Voltage               | 3V                     |
| Installation Type     | Portable               |
| Product Dimensions    | 20.5" x 12.6" x 6.1"   |
| Product Weight        | 14.1lb                 |

- Power output at 55,000BTU/Hr.
- Portable, compact and lightweight design.
- Digital temperature display in Fahrenheit.
- Eco & Full switch for energy saving up to 11.5%.
- 5 safety protection.



|                       |                        |
|-----------------------|------------------------|
| Model                 | BW264/BW264G           |
| Color                 | White/Gray             |
| Capacity              | 2.64GPM(10L/Min)       |
| Material              | Brass + Metal + Copper |
| Fuel Type             | Propane/Natural Gas    |
| Ignition Power Source | 2 Size D Batteries     |
| Voltage               | 3V                     |
| Installation Type     | Portable/Wall-mounted  |
| Product Dimensions    | 21.7" x 12.8" x 6.1"   |
| Product Weight        | 18.0lb                 |

- Power output at 68,000BTU/Hr.
- Portable and compact design.
- Digital temperature display in Fahrenheit.
- Eco & Full switch for energy saving up to 11.5%.
- 5 safety protection.



|                       |                        |
|-----------------------|------------------------|
| Model                 | BW422/BW422G           |
| Color                 | White                  |
| Capacity              | 4.22GPM(16L/Min)       |
| Material              | Brass + Metal + Copper |
| Fuel Type             | Propane                |
| Ignition Power Source | 2 Size D Batteries     |
| Voltage               | 3V                     |
| Installation Type     | Portable/Wall-mounted  |
| Product Dimensions    | 27.6" x 17.3" x 7.9"   |
| Product Weight        | 28.9lb                 |

- Power output at 110,000BTU/Hr.
- Compact design with high capacity.
- Digital temperature display in Fahrenheit.
- Eco & Full switch for energy saving up to 11.5%.
- 5 safety protection.







|                       |                        |
|-----------------------|------------------------|
| Model                 | Pro BD158              |
| Color                 | White                  |
| Capacity              | 1.58GPM(6L/Min)        |
| Material              | Brass + Metal + Copper |
| Fuel Type             | Propane                |
| Ignition Power Source | 2 Size D Batteries     |
| Voltage               | 3V                     |
| Installation Type     | Portable               |
| Product Dimensions    | 17.3" x 11.6" x 7.9"   |
| Product Weight        | 13.7lb                 |

- Power output at 41,000BTU/Hr.
- Portable, compact and lightweight design.
- Foldable handle for easy carry and hang up.
- Unique bezel design with LED temperature display.
- 5 safety protection.

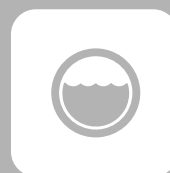


|                       |                        |
|-----------------------|------------------------|
| Model                 | Pro BD264              |
| Color                 | White                  |
| Capacity              | 2.64GPM(10L/Min)       |
| Material              | Brass + Metal + Copper |
| Fuel Type             | Propane                |
| Ignition Power Source | 2 Size D Batteries     |
| Voltage               | 3V                     |
| Installation Type     | Portable               |
| Product Dimensions    | 21.6" x 12.8" x 6.1"   |
| Product Weight        | 18.0lb                 |

- Power output at 68,000BTU/Hr.
- Portable and compact design.
- Thermal efficiency at 88.5%.
- Unique bezel design with LED temperature display.
- 5 safety protection.



# RESIDENTIAL GAS WATER HEATERS







|                       |                        |
|-----------------------|------------------------|
| Model                 | CM264/CM264B           |
| Color                 | White/Black            |
| Capacity              | 2.64GPM(10L/Min)       |
| Material              | Brass + Metal + Copper |
| Fuel Type             | Propane/Natural Gas    |
| Ignition Power Source | Electric               |
| Voltage               | 120V                   |
| Installation Type     | Wall-mounted           |
| Product Dimensions    | 20.3" x 12.8" x 5.9"   |
| Product Weight        | 23.8lb                 |

- Power output at 68,000BTU/Hr.
- Thermal efficiency up to 88.98%.
- Exclusive color screen temperature display in Fahrenheit.
- Eco & Full switch for energy saving.
- 5 safety protection.

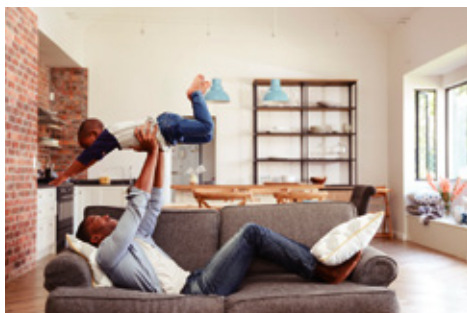






|                       |                        |
|-----------------------|------------------------|
| Model                 | CA318W/CA318           |
| Color                 | White/Black            |
| Capacity              | 3.18GPM(12L/Min)       |
| Material              | Brass + Metal + Copper |
| Fuel Type             | Propane/Natural Gas    |
| Ignition Power Source | Electric               |
| Voltage               | 120V                   |
| Installation Type     | Wall-mounted           |
| Product Dimensions    | 25.4" x 14.4" x 4.7"   |
| Product Weight        | 27.7lb                 |

- Power output at 82,000BTU/Hr.
- Thermal efficiency up to 88.98%.
- Trendy design with tempered glass front panel.
- Touch screen control with LED temperature display in Fahrenheit.
- 5 safety protection.





|                       |                        |
|-----------------------|------------------------|
| Model                 | CA528/CA528G           |
| Color                 | White/Gray             |
| Capacity              | 5.28GPM(20L/Min)       |
| Material              | Brass + Metal + Copper |
| Fuel Type             | Propane/Natural Gas    |
| Ignition Power Source | Electric               |
| Voltage               | 120V                   |
| Installation Type     | Wall-mounted           |
| Product Dimensions    | 22.2" x 14.0" x 5.9"   |
| Product Weight        | 32.3lb                 |

- Power output at 150,000BTU/Hr.
- Save energy, high thermal efficiency up to 92%.
- Imported PCB with precise temperature control.
- High capacity for residential whole home use.
- 5 safety protection.



|                       |                        |
|-----------------------|------------------------|
| Model                 | CA686M/CA686MG         |
| Color                 | White/Gray             |
| Capacity              | 6.86GPM(26L/Min)       |
| Material              | Brass + Metal + Copper |
| Fuel Type             | Propane/Natural Gas    |
| Ignition Power Source | Electric               |
| Voltage               | 120V                   |
| Installation Type     | Wall-mounted           |
| Product Dimensions    | 24.6" x 16.1" x 7.10"  |
| Product Weight        | 39.2lb                 |

- Power output at 180,000BTU/Hr.
- Save energy, high thermal efficiency up to 92%.
- Imported PCB with precise temperature control.
- High capacity for residential whole home use.
- 5 safety protection.





|                       |                        |
|-----------------------|------------------------|
| Model                 | Pro WA528/Pro WA528G   |
| Color                 | White/Gray             |
| Capacity              | 5.28GPM(20L/Min)       |
| Material              | Brass + Metal + Copper |
| Fuel Type             | Propane/Natural Gas    |
| Ignition Power Source | Electric               |
| Voltage               | 120V                   |
| Installation Type     | Wall-mounted           |
| Product Dimensions    | 23.4" x 15.0" x 5.9"   |
| Product Weight        | 35.3lb                 |

- Power output at 180,000BTU/Hr, for outdoor installation.
- Save energy, high thermal efficiency up to 92%.
- Comes with digital remote control with a 3.3ft cable.
- High capacity for residential whole home use.
- 5 safety protection.



|                       |                        |
|-----------------------|------------------------|
| Model                 | Pro WA686/Pro WA686G   |
| Color                 | White/Gray             |
| Capacity              | 6.86GPM(26L/Min)       |
| Material              | Brass + Metal + Copper |
| Fuel Type             | Propane/Natural Gas    |
| Ignition Power Source | Electric               |
| Voltage               | 120V                   |
| Installation Type     | Wall-mounted           |
| Product Dimensions    | 24.6" x 16.1" x 7.1"   |
| Product Weight        | 51.7lb                 |

- Power output at 180,000BTU/Hr, for outdoor installation.
- Low NOx emission levels for environmental protection.
- Comes with digital remote control with a 3.3ft cable.
- Energy factor of 0.82 for energy saving.
- 5 safety protection.

# ELECTRIC WATER HEATERS







|                       |                       |
|-----------------------|-----------------------|
| Model                 | ME10                  |
| Color                 | White                 |
| Capacity              | 1.3GPM                |
| Material              | Enamel + Plastic      |
| Ignition Power Source | Electric              |
| Voltage               | 120V/12A              |
| Installation Type     | Floor or wall mounted |
| Product Dimensions    | 11.0" x 12.5" x 10.0" |
| Product Weight        | 12.1lb                |

- 1.3 gallon point-of-use.
- High efficiency heating element for energy saving.
- Glass-lined tank for long service life.
- IPX24 waterproof.
- Multiple safety protection for safety use.





|                       |                       |
|-----------------------|-----------------------|
| Model                 | ME25                  |
| Color                 | White                 |
| Capacity              | 2.5GPM                |
| Material              | Enamel + Plastic      |
| Ignition Power Source | Electric              |
| Voltage               | 120V/12A              |
| Installation Type     | Floor or wall mounted |
| Product Dimensions    | 11.8" x 14.5" x 10.4" |
| Product Weight        | 14.4lb                |

- 2.5 gallon point-of-use.
- High efficiency heating element for energy saving.
- Glass-lined tank for long service life.
- IPX24 waterproof.
- Multiple safety protection for safety use.



|                       |                       |
|-----------------------|-----------------------|
| Model                 | ME40                  |
| Color                 | White                 |
| Capacity              | 4.0GPM                |
| Material              | Enamel + Plastic      |
| Ignition Power Source | Electric              |
| Voltage               | 120V/12A              |
| Installation Type     | Floor or wall mounted |
| Product Dimensions    | 11.8" x 19.3" x 10.3" |
| Product Weight        | 18.2lb                |

- 4.0 gallon point-of-use.
- High efficiency heating element for energy saving.
- Glass-lined tank for long service life.
- IPX24 waterproof.
- Multiple safety protection for safety use.



|                       |                       |
|-----------------------|-----------------------|
| Model                 | ME60                  |
| Color                 | White                 |
| Capacity              | 6.0GPM                |
| Material              | Enamel + Plastic      |
| Ignition Power Source | Electric              |
| Voltage               | 120V/12A              |
| Installation Type     | Floor or wall mounted |
| Product Dimensions    | 15.8" x 18.0" x 15.5" |
| Product Weight        | 25.4lb                |

- 6.0 gallon point-of-use.
- High efficiency heating element for energy saving.
- Glass-lined tank for long service life.
- IPX24 waterproof.
- Multiple safety protection for safety use.







|                       |                       |
|-----------------------|-----------------------|
| Model                 | Pro ME15B             |
| Color                 | White                 |
| Capacity              | 1.3GPM                |
| Material              | Enamel + Plastic      |
| Ignition Power Source | Electric              |
| Voltage               | 120V/12A              |
| Installation Type     | Floor or wall mounted |
| Product Dimensions    | 11.4" x 11.4" x 9.7"  |
| Product Weight        | 11.0 lb               |

- 1.3 gallon point-of-use.
- High efficiency heating element for energy saving.
- Glass-lined tank for long service life.
- IPX24 waterproof.
- Multiple safety protection for safety use.





|                       |                       |
|-----------------------|-----------------------|
| Model                 | Pro ME25B             |
| Color                 | White                 |
| Capacity              | 2.5GPM                |
| Material              | Enamel + Plastic      |
| Ignition Power Source | Electric              |
| Voltage               | 120V/12A              |
| Installation Type     | Floor or wall mounted |
| Product Dimensions    | 13.0" x 13.0" x 11.5" |
| Product Weight        | 15.4lb                |

- 2.5 gallon point-of-use.
- High efficiency heating element for energy saving.
- Glass-lined tank for long service life.
- IPX24 waterproof.
- Multiple safety protection for safety use.



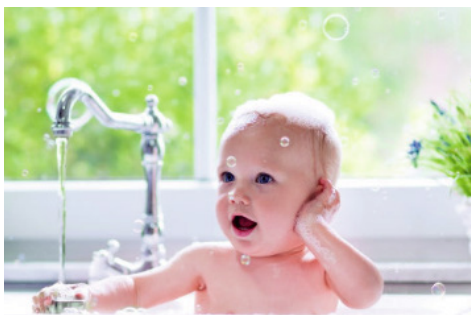
|                       |                       |
|-----------------------|-----------------------|
| Model                 | Pro ME40B             |
| Color                 | White                 |
| Capacity              | 4.0GPM                |
| Material              | Enamel + Plastic      |
| Ignition Power Source | Electric              |
| Voltage               | 120V/12A              |
| Installation Type     | Floor or wall mounted |
| Product Dimensions    | 14.5" x 14.5" x 12.9" |
| Product Weight        | 19.8lb                |

- 4.0 gallon point-of-use.
- High efficiency heating element for energy saving.
- Glass-lined tank for long service life.
- IPX24 waterproof.
- Multiple safety protection for safety use.



|                       |                       |
|-----------------------|-----------------------|
| Model                 | Pro ME70B             |
| Color                 | White                 |
| Capacity              | 6.5GPM                |
| Material              | Enamel + Plastic      |
| Ignition Power Source | Electric              |
| Voltage               | 120V/12A              |
| Installation Type     | Floor or wall mounted |
| Product Dimensions    | 17.7" x 17.7" x 14.6" |
| Product Weight        | 26.5lb                |

- 6.5 gallon point-of-use.
- High efficiency heating element for energy saving.
- Glass-lined tank for long service life.
- IPX24 waterproof.
- Multiple safety protection for safety use.







|                       |                           |
|-----------------------|---------------------------|
| Model                 | TE04/TE06                 |
| Color                 | White                     |
| Heat Output           | 3.5kW/6.0kW               |
| Material              | Stainless Steel + Plastic |
| Ignition Power Source | Electric                  |
| Voltage               | 120V/240V                 |
| Installation Type     | Wall-mounted              |
| Product Dimensions    | 7.8" x 6.3" x 3.9"        |
| Product Weight        | 4.0lb                     |

- 3.5kW for TE04, 6.0kW for TE06.
- ETL & NSF approved for safety use.
- Smart touch control and LED display.
- IPX24 waterproof.
- Flexible 360° installation that blends in any location.





|                       |                           |
|-----------------------|---------------------------|
| Model                 | TE11/TE18/TE27            |
| Color                 | White/Black               |
| Heat Output           | 11kW/18kW/27kW            |
| Material              | Stainless Steel + Plastic |
| Ignition Power Source | Electric                  |
| Voltage               | 240V                      |
| Installation Type     | Wall-mounted              |
| Product Dimensions    | 10.2" x 3.7" x 15.2"      |
| Product Weight        | 7.7 lb/12.1 lb/12.1 lb    |

- No need pre-heating and get hot water in seconds.
- Smart touch-control and LED display.
- Remote smart controller for convenient use.
- ETL & NSF approved for safety use.
- Flexible 180° installation that blends in any location.





# GAS FIRE PITS





|                    |                       |
|--------------------|-----------------------|
| Model              | FP19MB                |
| Color              | Black                 |
| Power Output       | 52,000BTU/Hr          |
| Material           | Metal                 |
| Fuel Type          | Propane               |
| Ignition Type      | Manual ignition       |
| Installation Type  | Portable              |
| Product Dimensions | 19.3" x 19.3" x 11.4" |
| Product Weight     | 19.8lb                |

- Manual ignition, without lid.
- Compact size, portable, lightweight and save space.
- Enamel design surface for long last & easy to clean.
- Comes with natural lava rocks for flickering effect.
- Includes CSA certified gas regulator for easy set up.



|                    |                       |
|--------------------|-----------------------|
| Model              | FP19AL                |
| Color              | Black                 |
| Power Output       | 52,000BTU/Hr          |
| Material           | Metal                 |
| Fuel Type          | Propane               |
| Ignition Type      | Automatic ignition    |
| Installation Type  | Portable              |
| Product Dimensions | 19.3" x 19.3" x 11.4" |
| Product Weight     | 22.5lb                |

- Automatic ignition, with lid & carry kit.
- Compact size, portable, lightweight and save space.
- Enamel design surface for long last & easy to clean.
- Comes with natural lava rocks for flickering effect.
- Includes CSA certified gas regulator for easy set up.





|                    |                                   |
|--------------------|-----------------------------------|
| Model              | FT30CB                            |
| Color              | Black                             |
| Power Output       | 50,000BTU/Hr                      |
| Material           | Steel                             |
| Table top Material | Ceramic                           |
| Fuel Type          | Propane                           |
| Ignition Type      | Electric (required a AAA battery) |
| Product Dimensions | 30.0" x 30.0" x 25.6"             |
| Product Weight     | 75.0lb                            |

- Provides up to 50,000 BTU of heat, burns off the chill.
- Made of wood-grain tiles, the side panels are wicker steel.
- Easily converted into a dining table, coffee table.
- Started quickly and stably by electric ignition.
- Include a fire pit table, lid, gas hose, lava rocks.







|                    |                                   |
|--------------------|-----------------------------------|
| Model              | FT30IB                            |
| Color              | Black                             |
| Power Output       | 40,000BTU/Hr                      |
| Material           | Steel                             |
| Table top Material | Steel                             |
| Fuel Type          | Propane                           |
| Ignition Type      | Electric (required a AAA battery) |
| Product Dimensions | 30.0" x 30.0" x 24.0"             |
| Product Weight     | 66.0lb                            |

- Provides up to 40,000 BTU of heat, burns off the chill.
- The side panels are wicker steel.
- Easily converted into a dining table, coffee table.
- Started quickly and stably by electric ignition.
- Include a fire pit table, lid, gas hose, lava rocks.







|                    |                       |
|--------------------|-----------------------|
| Model              | TT20S                 |
| Color              | Black                 |
| Material           | Steel                 |
| Fuel Type          | Propane               |
| Product Dimensions | 15.7" x 15.7" x 19.9" |
| Product Weight     | 18.1lb                |

- The propane cover makes storage very convenient.
- Great as an end table or plant stand.
- Tank hideaway table with spray paint.
- Easy access hinged top lid.
- The tank cover also can be a functional table.



# CAMPING STOVES







|                    |                      |
|--------------------|----------------------|
| Model              | JK-5310/JK-5310L     |
| Color              | Black/Blue           |
| Power Output       | 7,200BTU/Hr          |
| Material           | Metal                |
| Fuel Type          | Propane/Butane       |
| Product Dimensions | 13.2" x 11.6" x 3.5" |
| Product Weight     | 3.3lb                |

- Dual fuel design for used in a variety of situation.
- 7,200BTU output can be fulfilled variety cooking requirement.
- Coming with converter regulator and carrying case.
- Compact size, easy operation and clean.
- CSA approved for safety use.







|                    |                      |
|--------------------|----------------------|
| Model              | JK-6330              |
| Color              | Blue                 |
| Power Output       | 5,000BTU/Hr x 3      |
| Material           | Iron + Metal         |
| Fuel Type          | Propane              |
| Product Dimensions | 21.7" x 14.2" x 7.5" |
| Product Weight     | 15.4lb               |

- Power output total at 15,000BTU.
- Use with 20lb propane cylinder.
- Adjusted legs for easy move and freestanding.
- Cover included to fits securely for easy storage and travel.
- CSA approved for safety use.







|                    |                     |
|--------------------|---------------------|
| Model              | JK-5320             |
| Color              | Blue                |
| Power Output       | 7,000BTU/Hr x 2     |
| Material           | Iron + Metal        |
| Fuel Type          | Propane             |
| Product Dimensions | 16.5" x 8.7" x 3.2" |
| Product Weight     | 4.6lb               |

- Power output at total 14,000BTU.
- Use with 1lb propane tank.
- Compact size & lightweight ideal for outdoor cooking.
- Cover included to fits securely for easy storage and travel.
- CSA approved for safety use.



|                    |                                  |
|--------------------|----------------------------------|
| Model              | JK-5330                          |
| Color              | Blue                             |
| Power Output       | 6,600BTU/Hr x 2, 7,200BTU/Hr x 1 |
| Material           | Iron + Metal                     |
| Fuel Type          | Propane                          |
| Product Dimensions | 23.4" x 12.8" x 3.4"             |
| Product Weight     | 9.9lb                            |

- Power output total at 20,400BTU.
- Use with 1lb propane tank.
- Compact size & lightweight ideal for outdoor cooking.
- Cover included to fits securely for easy storage and travel.
- CSA approved for safety use.



|                    |                      |
|--------------------|----------------------|
| Model              | JK-6320              |
| Color              | Blue                 |
| Power Output       | 10,000BTU/Hr x 2     |
| Material           | Iron + Metal         |
| Fuel Type          | Propane              |
| Product Dimensions | 21.7" x 12.6" x 3.7" |
| Product Weight     | 9.7lb                |

- Power output total at 20,000BTU.
- Use with 1lb propane tank.
- Compact size & lightweight ideal for outdoor cooking.
- Cover included to fits securely for easy storage and travel.
- CSA approved for safety use.





|                    |                       |
|--------------------|-----------------------|
| Model              | JK-7280               |
| Color              | Yellow                |
| Power Output       | 10,000BTU/Hr          |
| Material           | Iron + Enamel         |
| Fuel Type          | Propane               |
| Product Dimensions | 20.7" x 13.0" x 10.6" |
| Product Weight     | 7.9lb                 |

- Power output total at 10,000BTU.
- Use with 1lb propane tank.
- Compact size & lightweight ideal for outdoor cooking.
- Cover included to fits securely for easy storage and travel.
- CSA approved for safety use.



|                    |                       |
|--------------------|-----------------------|
| Model              | JK-7470               |
| Color              | Blue                  |
| Power Output       | 10,000BTU/Hr          |
| Material           | Iron + Metal          |
| Fuel Type          | Propane               |
| Product Dimensions | 21.2" x 13.8" x 15.8" |
| Product Weight     | 18.1lb                |

- Power output total at 10,000BTU.
- Use with 1lb propane tank.
- Compact size & lightweight ideal for outdoor cooking.
- Cover included to fits securely for easy storage and travel.
- CSA approved for safety use.





|                    |                       |
|--------------------|-----------------------|
| Model              | JK-SS12               |
| Color              | Black                 |
| Power Output       | 120,000BTU/Hr         |
| Material           | Cast Iron             |
| Fuel Type          | Propane               |
| Product Dimensions | 15.8" x 15.8" x 12.6" |
| Product Weight     | 16.1lb                |

- 120,000BTU output for cooking quickly.
- Compact size, easy to move.
- High pressure 0-20 PSI adjustable regulator and hose are included.
- Suitable for various types of pot.
- Perfect for many occasions: brewing, camping, fishing





|                    |                       |
|--------------------|-----------------------|
| Model              | JK-SL21               |
| Color              | Black                 |
| Power Output       | 200,000BTU/Hr         |
| Material           | Cast Iron             |
| Fuel Type          | Propane               |
| Product Dimensions | 15.8" x 15.8" x 28.8" |
| Product Weight     | 24.0lb                |

- 200,000BTU output for cooking quickly.
- Removable and height adjustable legs, make it easy to move & adjust.
- High pressure 0-20PSI adjustable regulator and hose are included.
- Suitable for various types of pot.
- Perfect for many occasions: brewing, camping, fishing.



|                    |                       |
|--------------------|-----------------------|
| Model              | JK-SL13               |
| Color              | Black                 |
| Power Output       | 130,000BTU/Hr         |
| Material           | Cast Iron             |
| Fuel Type          | Propane               |
| Product Dimensions | 15.8" x 15.8" x 29.7" |
| Product Weight     | 16.5lb                |

- 130,000BTU output for cooking quickly.
- Removable and height-adjustable legs, make it easy to move & adjust.
- CSA certification regulator and 5ft hose are included.
- Suitable for various types of pot.
- Perfect for many occasions: brewing, camping, fishing.



|                    |                       |
|--------------------|-----------------------|
| Model              | JK-DL26               |
| Color              | Black                 |
| Power Output       | 130,000BTU/Hr x 2     |
| Material           | Cast Iron             |
| Fuel Type          | Propane               |
| Product Dimensions | 30.7" x 15.8" x 29.7" |
| Product Weight     | 31.0lb                |

- 260,000BTU output for cooking quickly.
- Removable legs, make it easy to move.
- CSA certification regulator and 5ft hose are included.
- Suitable for various types of pot.
- Perfect for many occasions: brewing, camping, fishing.







|                    |                                      |
|--------------------|--------------------------------------|
| Model              | TC01GB                               |
| Color              | Black                                |
| Power Output       | 9,500BTU/Hr                          |
| Material           | Tempered Glass + 304 Stainless Steel |
| Fuel Type          | Propane                              |
| Product Dimensions | 15.4" x 12.2" x 5.7"                 |
| Product Weight     | 8.0lb                                |

- Power output total at 9,500BTU.
- Compact size & lightweight, convenient to carry anywhere.
- CSA certification regulator and 5ft hose are included.
- Suitable for various types of pot.
- Perfect for outdoor cooking: camping, fishing, RV travel.



|                    |                                      |
|--------------------|--------------------------------------|
| Model              | TC02GB                               |
| Color              | Black                                |
| Power Output       | 9,500BTU/Hr x 2                      |
| Material           | Tempered Glass + 304 Stainless Steel |
| Fuel Type          | Propane                              |
| Product Dimensions | 28.5" x 15.2" x 5.7"                 |
| Product Weight     | 15.9lb                               |

- Power output total at 19,000BTU.
- Not easy to fragile, and it is easy to clean.
- CSA certification regulator and 5ft hose are included.
- Suitable for various types of pot.
- Perfect for outdoor cooking: camping, fishing, RV travel.



|                    |                      |
|--------------------|----------------------|
| Model              | TC01SS               |
| Power Output       | 9,800BTU/Hr          |
| Material           | 304 Stainless Steel  |
| Fuel Type          | Propane              |
| Product Dimensions | 15.0" x 10.6" x 3.9" |
| Product Weight     | 4.9lb                |

- Power output total at 9,800BTU.
- Compact size & lightweight, convenient to carry anywhere.
- CSA certification regulator and 5ft hose are included.
- Suitable for various types of pot.
- Perfect for outdoor cooking: camping, fishing, RV travel.



|                    |                      |
|--------------------|----------------------|
| Model              | TC02SS               |
| Power Output       | 9,800BTU/Hr x 2      |
| Material           | 304 Stainless Steel  |
| Fuel Type          | Propane              |
| Product Dimensions | 28.4" x 15.2" x 3.7" |
| Product Weight     | 6.6lb                |

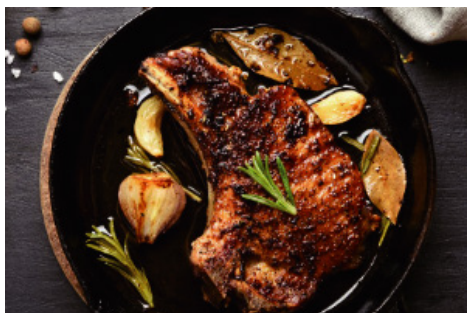
- Power output total at 19,600BTU.
- Made of stainless steel, easy to clean.
- CSA certification regulator and 5ft hose are included.
- Suitable for various types of pot.
- Perfect for outdoor cooking: camping, fishing, RV travel.





|                    |  |
|--------------------|--|
| Model              | GCO02SS  |
| Color              | Black  |
| Power Output       | Stove 8,500BTU/Hr, 5,100BTU/Hr<br>Oven 5,100BTU/Hr |
| Material           | 304 Stainless Steel                                |
| Fuel Type          | Propane  |
| Product Dimensions | 24.8" x 14.4" x 19.7"                              |
| Product Weight     | 33.1lb   |

- Power output total at 18,700BTU.
- Made of stainless steel, easy to clean.
- CSA certification regulator is included.
- The oven and stove can be used at the same time, suitable for various types of pot.
- Perfect for outdoor cooking: camping, fishing, RV travel.







|                       |                       |
|-----------------------|-----------------------|
| Model                 | SG102                 |
| Power Output          | 10,000BTU/Hr          |
| Material              | Stainless Steel/Metal |
| Fuel Type             | Propane               |
| Ignition Power Source | AA battery            |
| Voltage               | 1.5V                  |
| Installation Type     | Portable              |
| Product Dimensions    | 17.9" x 14.2" x 12.4" |
| Product Weight        | 24.9lb                |

- Power output at 10,000BTU/Hr.
- Extreme 1600°F flash heating.
- Lightweight, portable and compact design.
- Patented adjustable grill & easy to clean.
- Easy handling & quick installation options for 1lb propane tank and standard propane cylinder.







|                    |                        |
|--------------------|------------------------|
| Model              | RV201S                 |
| Power Output       | 7,200BTU + 5,200BTU/Hr |
| Material           | Stainless Steel/Metal  |
| Fuel Type          | Propane                |
| Ignition Type      | Manual ignition        |
| Installation Type  | Built-in               |
| Product Dimensions | 18.5" x 13.0" x 4.5"   |
| Product Weight     | 13.5lb                 |

- Power output at 7,200BTU/Hr + 5,200BTU/Hr.
- Compact size and lightweight drop-in cooktop.
- Convenient knobs adjust to desired flame size.
- Wind guards keep flame from going out during cooking.
- Cover included to fits securely for easy storage and travel.



|                    |                       |
|--------------------|-----------------------|
| Model              | RV202S                |
| Power Output       | 7,200BTU+5,200BTU/Hr  |
| Material           | Stainless Steel/Metal |
| Fuel Type          | Propane               |
| Ignition Type      | Automatic ignition    |
| Installation Type  | Built-in              |
| Product Dimensions | 18.3" x 13.4" x 5.3"  |
| Product Weight     | 13.9lb                |

- Power output at 7,200BTU/Hr + 5,200BTU/Hr.
- Compact size and lightweight drop-in cooktop.
- Convenient knobs adjust to desired flame size.
- Wind guards keep flame from going out during cooking.
- Cover included to fits securely for easy storage and travel.

# GAS GRIDDLE







|                    |                      |
|--------------------|----------------------|
| Model              | GG201S               |
| Color              | Silver               |
| Power Output       | 15,000 BTU/Hr        |
| Material           | Steel                |
| Fuel Type          | Propane              |
| Ignition Type      | Electric             |
| Product Dimensions | 17.5" x 15.2" x 8.5" |
| Product Weight     | 25.4lb               |

- Power output total at 15,000BTU.
- With 20 lb gas hose and RV quick regulator.
- Compact size & lightweight ideal for outdoor cooking.
- Cleanup is fairly easy that using a scraper, soap water.
- Fits securely for easy storage and travel.







|                    |                      |
|--------------------|----------------------|
| Model              | GG301S               |
| Color              | Silver               |
| Power Output       | 13,000 BTU/Hr        |
| Material           | Steel                |
| Fuel Type          | Propane              |
| Ignition Type      | Electric             |
| Product Dimensions | 16.9" x 16.5" x 8.2" |
| Product Weight     | 21.4lb               |

- Power output total at 13,000BTU.
- Use with 1lb propane tank.
- Compact size & lightweight ideal for outdoor cooking.
- Cleanup is fairly easy that using a scraper, soap water.
- Fits securely for easy storage and travel.



|                    |                      |
|--------------------|----------------------|
| Model              | GG302S               |
| Color              | Silver               |
| Power Output       | 22,000 BTU/Hr        |
| Material           | Steel                |
| Fuel Type          | Propane              |
| Ignition Type      | Electric             |
| Product Dimensions | 22.4" x 16.5" x 8.2" |
| Product Weight     | 27.6lb               |

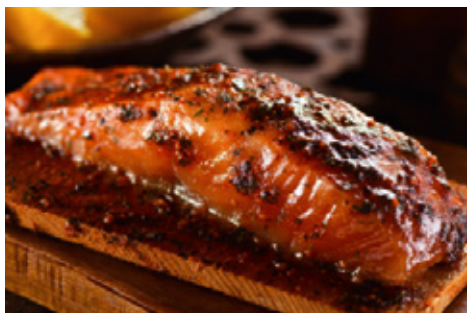
- Power output total at 22,000BTU.
- Use with 1lb propane tank.
- Compact size & lightweight ideal for outdoor cooking.
- Cleanup is fairly easy that using a scraper, soap water.
- Fits securely for easy storage and travel.





|                    |                                   |
|--------------------|-----------------------------------|
| Model              | FMGG302B                          |
| Color              | Black                             |
| Power Output       | 22,000BTU/Hr                      |
| Material           | Steel                             |
| Fuel Type          | Propane                           |
| Ignition Type      | Electric (required a AAA battery) |
| Product Dimensions | 36.1" x 12.6" x 32.5"             |
| Product Weight     | 34.1lb                            |

- Power output total at 22,000BTU.
- Use with 20lb propane tank.
- Ideal for backyard outdoor cooking.
- Cleanup is fairly easy that using a scraper, soap water.
- Fits securely for easy storage and travel.





|                    |                  |
|--------------------|------------------|
| Model              | JK-2202          |
| Color              | Black            |
| Capacity           | 1.2GPM(4.3L/Min) |
| AMPS               | 3.5A max         |
| Voltage            | 12V              |
| Product Dimensions | 6.5 x 4.0"       |
| Product Weight     | 1.5lb            |

- 1.2 gallons per minute.
- Self-priming, can be mounted on tank, able to run dry.
- Built-in 35 PSI pressure switch, automatic turns on and off.
- With CE certification.
- Can be used for gas hot water system, general water transfer, etc.



|                    |                  |
|--------------------|------------------|
| Model              | JK-3206          |
| Color              | Black            |
| Capacity           | 1.6GPM(6.0L/Min) |
| Power Output       | 6.0A max         |
| Voltage            | 12V              |
| Product Dimensions | 7.4" x 4.0"      |
| Product Weight     | 2.7lb            |

- 1.6 gallons per minute.
- Self-priming, can be mounted on tank, able to run dry.
- Built-in 65 PSI pressure switch, automatic turns on and off.
- With CE certification.
- Can be used for gas hot water system, general water transfer, etc.



|                    |                   |
|--------------------|-------------------|
| Model              | JK-4000           |
| Color              | Black             |
| Capacity           | 3.3GPM(12.5L/Min) |
| Power Output       | 8.0A max          |
| Voltage            | 12V               |
| Product Dimensions | 8.2" x 3.6"       |
| Product Weight     | 4.5lb             |

- 3.3 gallons per minute.
- Self-priming, can be mounted on tank, able to run dry.
- Built-in 40 PSI pressure switch, automatic turns on and off.
- With CE certification.
- Multitude application for widely use.



|                    |                  |
|--------------------|------------------|
| Model              | JK-3206P         |
| Color              | Black            |
| Capacity           | 1.6GPM(6.0L/Min) |
| Power Output       | 6.0A max         |
| Voltage            | 12V              |
| Product Dimensions | 7.4" x 3.9"      |
| Product Weight     | 5.5lb            |

- 1.6 gallons per minute
- Self-priming, can be mounted on tank, able to run dry
- Come with alligator clip lead, cigarette socket lead, outlet garden hose and suction hose with filter
- With CE certification
- Can be used for Camplux gas hot water system, general water transfer, etc.





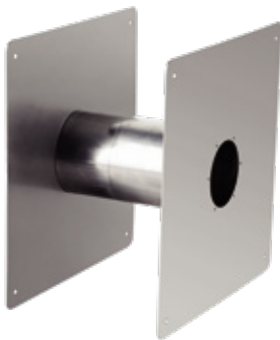
|                |                 |
|----------------|-----------------|
| Model          | RC354           |
| Color          | Silver          |
| Material       | Stainless Steel |
| Diameter       | 3.5"            |
| Product Weight | 12.0lb          |

- High quality stainless steel venting, resistant to rust and corrosion for long lasting use.
- Prevents rain water, leaves or other objects from running down.
- The cap can improve the tankless water heater performance in high wind conditions.
- Perfect for Camplux portable model Pro BD158.
- Suitable for all brands outdoor gas water heater which with venting inner diameter at 3.5".



|                |                 |
|----------------|-----------------|
| Model          | RC433           |
| Color          | Silver          |
| Material       | Stainless Steel |
| Diameter       | 4.3"            |
| Product Weight | 14.1lb          |

- High quality stainless steel venting, resistant to rust and corrosion for long lasting use.
- Prevents rain water, leaves or other objects from running down.
- The cap can improve the tankless water heater performance in high wind conditions.
- Perfect for Camplux portable model BW211, BW264, Pro BD264.
- Suitable for all brands outdoor gas water heater which with venting inner diameter at 4.3".



|                |                 |
|----------------|-----------------|
| Model          | WT236           |
| Color          | Silver          |
| Material       | Stainless Steel |
| Diameter       | 2.4"            |
| Product Weight | 2.8lb           |

- 2.4" inner diameter for complete pass through and fire stop.
- Perfect for Camplux residential model CA318.
- Adjustable width from 4.3" to 7.9".
- Made by high-quality stainless steel, resistant to rust and corrosion.
- With tight inner connection, no gasket or sealant required.




|                |                 |
|----------------|-----------------|
| Model          | CP-70           |
| Color          | Silver          |
| Material       | Stainless Steel |
| Diameter       | 2.8"            |
| Product Weight | 1.5lb           |

- Vent pipe compatible with residential model CA528.
- The diameter is 2.8", match to 5.28GPM indoor tankless gas water heater.
- The exhaust pipe is made of high quality stainless steel.
- Includes a 90° elbow and a 20-inch termination pipe.
- Vent Pipe comes with everything you need.



**CAMPLUX**



 1(844) 538-7475

 Visit Us: [Camplux.com](http://Camplux.com)

 [support@camplux.com](mailto:support@camplux.com)